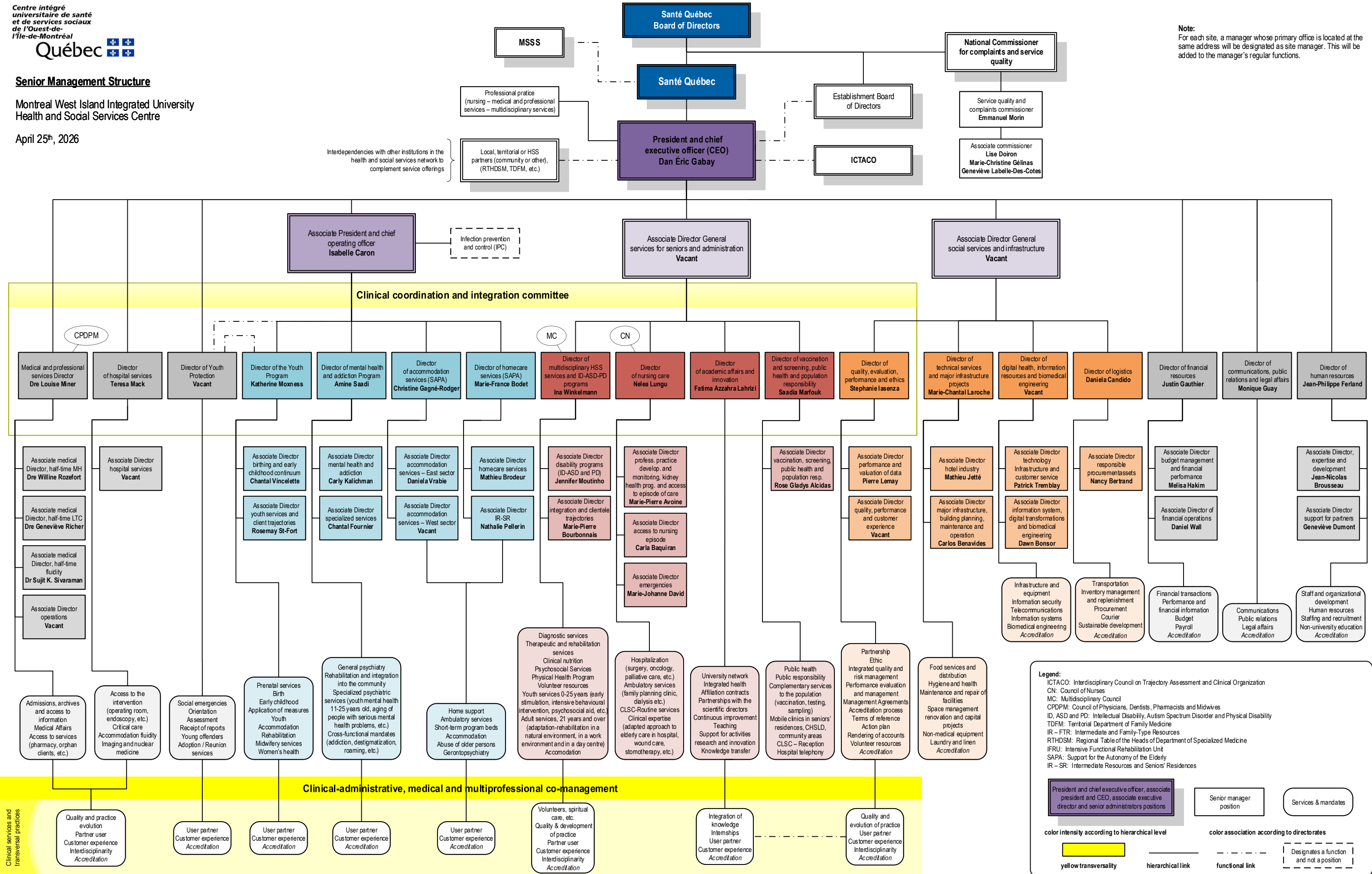


Senior Management Structure

Montreal West Island Integrated University Health and Social Services Centre

April 25th, 2026

Note:
 For each site, a manager whose primary office is located at the same address will be designated as site manager. This will be added to the manager's regular functions.



Legend:

- ICTACO: Interdisciplinary Council on Trajectory Assessment and Clinical Organization
- CN: Council of Nurses
- MC: Multidisciplinary Council
- CPDPM: Council of Physicians, Dentists, Pharmacists and Midwives
- ID, ASD and PD: Intellectual Disability, Autism Spectrum Disorder and Physical Disability
- TDFM: Territorial Department of Family Medicine
- IR – FTR: Intermediate and Family-Type Resources
- RTHDSM: Regional Table of the Heads of Department of Specialized Medicine
- IFRU: Intensive Functional Rehabilitation Unit
- SAPA: Support for the Autonomy of the Elderly
- IR – SR: Intermediate Resources and Seniors' Residences

color intensity according to hierarchical level

color association according to directorates

President and chief executive officer, associate president and CEO, associate executive director and senior administrators positions
Senior manager position
Services & mandates

yellow transversality
 hierarchical link
 functional link
 Designates a function and not a position