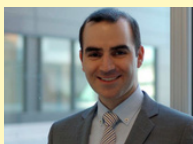


# St. Mary's Research Centre

OCTOBER 2022

## FROM THE SCIENTIFIC DIRECTOR



Dear members of the SMRC community,

The October edition of the newsletter is rich with information reflecting our efforts at growth and recovery from the COVID-19 pandemic.

You'll get to meet Jean-Daniel Beauchene, the newly appointed General Manager of the SMRC, who will be instrumental in optimizing the use of our resources. His appointment coincides with the Research Centre's efforts at returning to the "new" normal of a research center embedded in a health care facility.

In the past few months, we were able to reactivate the C.A.R.E. funding program with the support of St. Mary's Hospital Foundation. This unique funding mechanism provides financial support as well as methodological mentorship to clinicians who want to contribute to scientific advancement on St. Mary's campus. You'll get to learn more about the study led by Dr Anthony Albers that was selected for funding by a panel of external peer-reviewers.

You'll also find out about our rich program of Lunch & Learn presentations, that range from science on vulnerable patients to entrepreneurship in research. Realizing the importance of these knowledge transfer opportunities, the SMRC is committed to increasing their availability across campus. Therefore, we'll soon work on providing professional development credits for health care professionals attending these sessions.

Finally, there was a special presentation on September 29 on the priorities of the SMRC as we progress towards applying for formal designation. The Power Point is available on demand. The coming months will be full of exciting challenges for the SMRC as we position ourselves for further growth. I invite everyone to take part in shaping the future of our Research Centre.

I hope you'll enjoy reading about research on campus.

Ari Meguerditchian, MD  
Scientific Director

## IN THIS ISSUE

Interview with New  
SMRC General Manager -  
2

C.A.R.E. Award 2022 -3

Academic Output - 4

Employment  
opportunities - 4

Oncology  
Clinical Trials - 5

SMRC & Staff News - 7

SMRC Events - 8

# INTERVIEW WITH JEAN-DANIEL BEAUCHESNE

*In September 2022, Jean-Daniel Beauchesne was appointed to the position of General Manager. In this interview we get to know him and a little more and understand the recent and upcoming organizational changes at SMRC.*

## **What brought you in the field of management and at SMRC?**

I think I've always had an entrepreneurial mindset. After college, I founded a project management company for building sustainable housing. This turned out to be a very positive experience. I decided to pursue undergraduate studies in the field of environmental sciences, sustainable energy resources and health and social services management. These studies took me to spend a year in Norway. I then completed a master in financial and human resources management.

After graduate studies, I was fortunate to work in the academic sector in Montreal at McGill and Université de Montréal. At McGill, I was the manager of the Redpath Museum and at the University of Montreal I worked for the Office of Research, Development and Valorization. My interests for research environments and the experience acquired in finance brought me in 2021 to the St. Mary's Research Centre (SMRC).

## **What were your goals / achievements during year 1?**

The financial restructuring of the SMRC finances was an urgent matter; it became my first mandate. The main goal was the development of tools that would guarantee optimization, traceability and transparency. The second goal was to layer the foundations of human resources practices. The SMRC must be compliant with the CIUSSS-ODIM policies and we must also meet the actual job market.

## **What's coming next?**

The next step will to properly integrate the new financial and human resources frame into the administrative structure. We aim to harmonize and optimize the working organization and communication flows. For example, we are working on an online portal where all policies and procedures will be stored and accessible to every staff member

## **Which values do find important in a professional environment?**

I advocate for collaboration and professional commitment. This is why I chose the SMRC: these values were already in the organizational culture. On a personal level, I am a country man. The protection and conservation of nature and the environment in general are fundamental concerns. I am planning to build a small farm where animals and agriculture will occupy my free time.



“

I advocate for collaboration and professional commitment.

This is why I chose the SMRC: these values were already in the organizational culture

”

# C.A.R.E. COMPETITION ATTRACTING RESEARCH EXCELLENCE

We are delighted to announce the 2022 C.A.R.E. recipient:

**Dr. Anthony Albers, orthopedist**

Reducing pain after hip replacement: A comparison of four different techniques.

Total hip replacement is one of the most common orthopaedic procedures, mainly performed to treat advanced arthritis of the hip. Even though total hip replacements are becoming increasingly popular, there is still room for improvement for managing pain associated with this surgery. Currently, multiple methods of pain control are being used, including local anesthetic infiltration (LAI) and peripheral nerve group (PENG) block, in addition to medications taken by mouth, such as acetaminophen, non-steroidal anti-inflammatory drugs and narcotics.

Suprainguinal fascia iliaca compartment block (FICB) is a newer technique that takes advantage of ultrasound to guide injection of anesthetic medications to temporarily block two or three nerves of the leg.

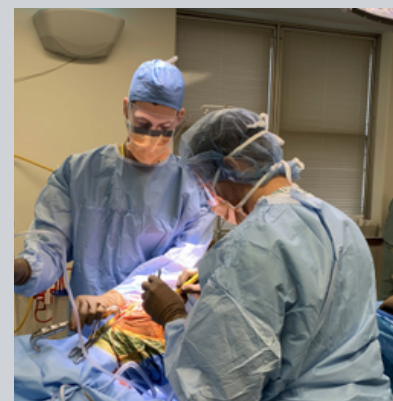
Even though available evidence shows that this block may be effective in pain control while also reducing the need for narcotics, it is not known whether FICB offers superior pain control compared to PENG block or LAI.

In this research study, we aim to evaluate postoperative pain and side effects related to pain control in patients who receive FICB versus LAI versus PENG block following THA. We aim to compare these procedures between each other and ascertain whether these techniques compare favourably to spinal anesthetic as a control group

Project title: Prospective randomized study comparing suprainguinal fascia iliaca block vs. pericapsular nerve group block vs. local anesthetic infiltration vs spinal anesthetic without adjuncts for pain control following total hip arthroplasty"

Amount awarded: \$29,972

Duration: 2 years



*Dr. Albers in surgery*

## ABOUT C.A.R.E. GRANTS



FONDATION DE  
L'HÔPITAL  
ST. MARY

ST. MARY'S  
HOSPITAL  
FOUNDATION

The development of high-quality research is one of St. Mary Hospital Center top priorities, in light of its affiliation with McGill University.

In 2008, St. Mary's Research Centre and the Foundation created the C.A.R.E. (Competition Attracting Research Excellence) Program to support projects that contribute towards the development of clinical and health services research capacity and have the potential to result in increased external research funding and peer-reviewed publications.

In particular, the aim of the C.A.R.E. program is to help staff members interested in research gain valuable experience in designing and leading a research project that is attuned to the needs and priorities of the Hospital.

C.A.R.E. grants support projects that contribute to the development of clinical and health services research capacity at St. Mary's and have the potential to result in increased external research funding and peer-reviewed publications.

# ACADEMIC OUTPUT



## Best Presentation Award

Nina Morena was awarded the best e-poster presentation award at the Canadian Society of Surgical Oncology stream at the 2022 Canadian Surgery Forum.

Nina presented "Are YouTube videos a reliable information source for young women with metastatic breast cancer?" on September 16, 2022.

The [abstract](#) of her research was recently published in the Journal of Clinical Oncology.

## Preprint Publication

McCusker J, Warburton RN, Lambert SD, Belzile E. de Raad, M. The Revised Identification of Seniors at Risk screening tool predicts readmission in older hospitalized patients. BMC Geriatrics. DOI: <https://doi.org/10.21203/rs.3.rs-1318480/v1>

# EMPLOYMENT OPPORTUNITY



[Assistant Professor \(Research\), Gerald Bronfman Department of Oncology \(C-220912\).](#)

[Associate or Full Professor \(Research\), McGill University Research Chair in Community Cancer Care, St. Mary's Hospital Centre \(C-220713\).](#)

# ROSTER OF ACHIEVE ONCOLOGY CLINICAL TRIALS

## Bladder cancer

A Phase 3, randomized, study of neoadjuvant chemotherapy alone versus neoadjuvant, chemotherapy plus Nivolumab or Nivolumab and BMS-986205, followed by continued post- surgery therapy with Nivolumab and BMS-986205 in participants with muscle-invasive bladder cancer. [CA017-078]

## Breast cancer

"A Clinical Trial to Determine the Efficacy of Five Years of Letrozole Compared to Placebo in Patients Completing Five Years of Hormonal Therapy Consisting of an Aromatase Inhibitor (AI) or Tamoxifen Followed by an AI in Prolonging Disease-Free Survival in Postmenopausal Woman with Hormone Receptor Positive Breast Cancer" [NSABP-42]

A Randomized Phase III Trial of Adjuvant Therapy Comparing Chemotherapy Alone (Six Cycles of Docetaxel Plus Cyclophosphamide or Four Cycles of Doxorubicin Plus Cyclophosphamide Followed by Weekly Paclitaxel) to Chemotherapy Plus Trastuzumab in Woman With Node- Positive or High-Risk Node-Negative HER2-Low Invasive Breast Cancer [NSABP-47]

A Phase III Study of Trastuzumab Deruxtecan (T-DXd) with or without Pertuzumab vs Taxane, Trastuzumab and pertuzumab in HERs-Positive, first-line Metastatic Breast Cancer [Destiny]

A Phase III, Randomized Open-Label Multicenter Study Evaluating the Efficacy and Safety of Adjuvant Giredestrant compared with Physicians Choice of Adjuvant Endocrine Monotherapy in patients with Estrogen Receptor-Positive HER-Negative Early Breast Cancer [TRIO045]

Identification and evaluation of patients at risk of developing cardiotoxicity after receiving chemotherapy for breast cancer, leukemia or lymphoma [CarChem]

## Lung cancer

A Phase 3 Study of Pembrolizumab in Combination with Pemetrexed/Platinum (Carboplatin or Cisplatin) Followed by Pembrolizumab and Maintenance Olaparib vs Maintenance Pemetrexed in the First-Line Treatment of Participants with Metastatic Non squamous Non-Small-Cell Lung Cancer [MK7339-006]

A Phase 3 Study of Pembrolizumab in Combination with Carboplatin/Taxane (Paclitaxel or Nab-paclitaxel) Followed by Pembrolizumab with or without Maintenance Olaparib in the First-line Treatment of Metastatic Squamous Non-small Cell Lung Cancer (NSCLC) [MK7339-008]

A Phase 3 Randomized, Placebo-controlled Study to Evaluate the Safety and Efficacy of Pemetrexed + Platinum Chemotherapy + Pembrolizumab (MK-3475) with or without Lenvatinib (E7080/MK-7902) as First-line Intervention in Participants with Metastatic Non squamous Non-small Cell Lung Cancer [MK7902-006]





# ROSTER OF ACHIEVE ONCOLOGY CLINICAL TRIALS

## Lung cancer - continued

A Phase 3 Study of Pembrolizumab in Combination with Pemetrexed/Platinum (Carboplatin or Cisplatin) Followed by Pembrolizumab and Maintenance Olaparib vs Maintenance Pemetrexed in the First-Line Treatment of Participants with Metastatic Non squamous Non-Small-Cell Lung Cancer [MK7339-006]

A Phase 3 Study of Pembrolizumab in Combination with Carboplatin/Taxane (Paclitaxel or Nab-paclitaxel) Followed by Pembrolizumab with or without Maintenance Olaparib in the First-line Treatment of Metastatic Squamous Non-small Cell Lung Cancer (NSCLC) [MK7339-008]

A Phase 3 Randomized, Placebo-controlled Study to Evaluate the Safety and Efficacy of Pemetrexed + Platinum Chemotherapy + Pembrolizumab (MK-3475) with or without Lenvatinib (E7080/MK-7902) as First-line Intervention in Participants with Metastatic Non squamous Non-small Cell Lung Cancer [MK7902-006]

A Phase 3, Multicenter, randomized, open-label trial to compare the efficacy and safety of pembrolizumab (MK-3475) in combination with Lenvatinib (E7080/MK-7902) versus docetaxel in previously treated participants with metastatic Non-small cell lung cancer (NSCLC) and progressive disease (PD) after platinum doublet chemotherapy and immunotherapy [MK7902-008]

A phase 3 study of Pembrolizumab (MK-3475) in combination with concurrent chemoradiation therapy followed by Pembrolizumab with or without Olaparib vs concurrent chemoradiation therapy followed by Durvalumab in participants with unresectable, locally advanced, stage III non-small cell lung cancer (NSCLC). [MK 7339-012]

A randomized, double-blind, placebo-controlled phase 3 study of Pembrolizumab (MK-3475) in combination with concurrent chemoradiation therapy followed by Pembrolizumab with or without Olaparib (MK-7339), compared to concurrent chemoradiation therapy alone in participants with newly diagnosed treatment-naïve limited-stage small cell lung cancer (LS-SCLC). [MK 7339-013]

A Phase 1b/2 Study to evaluate the efficacy and safety of Pembrolizumab in Combination with Investigational Agents for the treatment of Participants With PD-1/L1-refractory Extension-Stage Small Cell Lung Cancer in need of Secondary-Line Therapy [MK3475-B98]

A Phase 2 Study to Evaluate the Efficacy and Safety of Pembrolizumab plus Investigational Agents in Combination with Etoposide and Cisplatin or Carboplatin for the first line Treatment of Participants with Extensive Stage Small Cell Lung Cancer [MK3475-B99]

A Randomized Open Label Phase 3 Study of SAR408701 vs Docetaxel in Previously treated Metastatic Non-Squamous Non-Small Cell Lung Cancer patients with CEACAM5 Positive Tumors [EFC15858]



Information:  
Franca Cantini  
Program Manager, Oncology Clinical Trials  
[franca.cantini.comtl@ssss.gouv.qc.ca](mailto:franca.cantini.comtl@ssss.gouv.qc.ca)

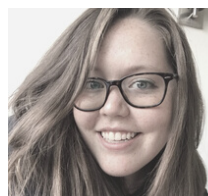
# SMRC & STAFF NEWS

## News



**Dr Ari Meguerditchian** was re-appointed for a 4-year mandate as Member of the Surgery Test Committee of the Medical Council of Canada. The committee develops examination content for the LMCC examination that all medical graduates must succeed before entering practice in Canada.

## New member



**Emma Bainbridge** joined the e-IMPAQc team in September 2022. Under supervision of Dr. Sylvie Lambert, Emma is responsible for coordinating the satellite studies and oversees the execution of deliverables. Before joining SMRC, Emma worked as a Clinical Trial Coordinator at the MUHC. She obtained her B.Sc in Pharmacology and Therapeutics from McGill University in 2021. [LinkedIn](#)

## SMRC FALL LIFT CHALLENGE AT PARC MAISONNEUVE

From October 11 to November 9 staff will be again able to challenge themselves and their colleagues in a wellness challenge. Lift sessions, walking, running, spinning, yoga, etc, here we come!

The challenge was launched at Parc Maisonneuve in Montreal. Participants walked or jogged a 2.9km (4000 steps) loop in this beautiful urban parc. The activity was followed by a pic-nic.



THURSDAYS  
KNOWLEDGE TRANSFER EVENTS  
12PM-1PM

<https://us02web.zoom.us/j/409644888>

**October**

6 - [Victoria Wicks](#)

Dazed in a maze: The experiences of socially vulnerable patients navigating the healthcare system

6 - [Delufa Tuz Jerin](#)

Can self-help tools help South Asian women overcome barriers to accessing mental health care?  
A study proposal

20 - [Rebecca MacDonald](#)

You're doing a multicenter research?  
Here is how Nagano can help you

27- [Jeannie Haggerty, PhD](#)

Lean start-up course: My experience

**November**

17 - Bonnie Barnett, MA

Knowledge transfer and innovation:  
Your partner in research

24 - [Taylor Wasserman, B.Sc.](#)

Lessons learned implementing innovative knowledge translation for cancer care for e-IMPAQc

**December**

15 - [Guillaume Fontaine, PhD](#)

An introduction to implementation science and an overview of key considerations for successful implementation efforts