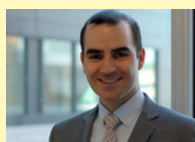


St. Mary's Research Centre

NOVEMBER 2022

FROM THE SCIENTIFIC DIRECTOR



Dear members of the SMRC community,

We are proud to share with you the November issue of the SMRC's newsletter. This month, we showcase the work of

the **Health Experiences** collaborative research group, led by Dr Susan Law. **Health Experiences** aims to validate the value of patients' collective experience with illness and health to provide better support. It capitalizes on the internet as an easily accessible information channel to guide patients with difficult decisions and conversations. As such, it elegantly reflects values that are at the heart of the SMRC: research that matters to people.

You'll also learn about the various health-oriented initiatives that we have put in place for our staff to promote wellness and strengthen recovery from the COVID-19 pandemic.

The coming months will be very busy at the SMRC, as we move forward with the selection of the Community Oncology Chair and the Research Professorship in Cancer Epidemiology.

In addition, the strategic planning process that will guide the future of our research centre has now been launched. I encourage everyone to participate, it is your opportunity to shape our priorities for the next decade. You'll find details on the process and survey that is now open in the newsletter. I would like to thank our Associate Director, Christina Raneburger, who in three short months was able to launch the strategic planning process. I look forward to seeing you at the various work groups.

Ari Meguerditchian, MD
Scientific Director

IN THIS ISSUE

Perinatal Mental Health - 2

Cancer Research News - 4

SMRC Strategic Exercise - 5

Oncology Clinical Trials - 6

Staff News - 8

SMRC News- 9

Academic Output - 11

Employment opportunities - 11

SMRC Events - 11

PERINATAL MENTAL HEALTH: INTERVIEW WITH THE HEALTH EXPERIENCES TEAM

Over the past 10 years, the team behind the [Health Experiences research initiative](#), launched at St. Mary's Research Centre, has strived to include the experiences of people who are part of vulnerable groups. For example, the team has developed collections of patients' experiences directly related to vulnerable groups (e.g. immigrant and migrant mental health and caregiving experiences) but also dedicated extra time and effort to recruit participants from vulnerable groups in studies focused on broader topics.

When and why was Health Experiences was created? Can you talk about its background?

The approach adopted by the Canadian Health Experiences research team was initially developed in the UK at the University of Oxford in 2000 by two doctors who were dealing with personal health issues. Plenty of clinical or biomedical information was available to them at the time, but they wished to learn more from other peoples' experiences with illness and health and they found that this type of information was scarce. Answers to questions such as: "How do I tell my children? Are treatments going to hurt?" were difficult to obtain.

A team at Oxford developed a research approach where people were interviewed about their experiences with health and illness with the aim of collecting material that would provide reliable evidence-based information from a wide variety of patients. In the first collection of individual experiences, they interviewed people with breast cancer.

At that time, the Internet was just emerging as a new medium for communication; video recordings on the web were an innovative way to share information. Enthused by this initiative, Dr. Susan Law had the chance to launch the initiative in Canada in 2011, thanks to funding and support from SMHF.

Collaborations with other qualitative research teams interested in this approach were then built across 14 countries, each producing collections of patient stories within countries and launching results on country-based web sites.

In Canada, <https://healthexperiences.ca/>, was launched in 2016. Together with the it was decided that caregiving would be the first module. Since then, four other modules have been developed: Breast Cancer, Immigrant Mental Health, Living with an Amputation and Patient-Researcher Partnerships. Three new modules are currently in progress: Heart Failure in Women, Long COVID, and Mental Health and Pregnancy.

A catalyst trigger film on Mental Health and Pregnancy was released in September 2020. A research protocol was also recently submitted to the CIUSSS-ODIM Research and Ethic Board. Can you explain a little more about this new module?

From the 21 interviews conducted for the earlier pilot project funded by the Royal Bank of Canada Foundation, a short catalyst film was created where viewers can reflect on what it is like to live with mental health during and after pregnancy. An article featuring key themes from these interviews was published in 2021 in the International Journal of Mental Health Nursing.*

* Law S, Ormel I, Babinski S, Plett D, Dionne E, Schwartz H, Rozmovits L. [Dread and solace: Talking about perinatal mental health](#). Int J Ment Health Nurs, 30(S1):1376-1385 2021.

“

Learning from health experiences can improve health outcomes, health information and health education. It contributes to changing perceptions.

”

PERINATAL MENTAL HEALTH: INTERVIEW WITH THE HEALTH EXPERIENCES TEAM

The team is now recruiting about 20 more people to add to this initial collection in order to meet DIPEX International standards for a full module which will include about 25 thematic pages that feature excerpts of text, audio & video from the interviews.

This full Mental Health and Pregnancy module will feature topics that were important to the participants and include challenges around the care for the baby and self, perspectives on stigma around perinatal mental health, societal expectations with regards to breastfeeding and about being a “good mother” and bonding with the baby.

Who and where are you recruiting?

The recruitment strategy is currently focused on our aim to enhance the diversity of participants within the collection, to include people with different backgrounds, genders, relationships, economic status, and cultural as well as geographic variations.

The team is recruiting across Canada and targets people 18 years or older that self-identify as having or had experienced mental health problems during the perinatal period, which means, for this study, from the beginning of pregnancy up to one year after the child's birth.

The project will include people who gave birth up to five years previously so that we include longer-term reflections on their perinatal mental health experiences during and after pregnancy. The participant must be comfortable for an interview conducted in English (given resource constraints for this project).

What is the next project for Health Experiences.ca?

The Canadian team is currently coordinating an international collaboration amongst our DIPEX International colleagues that will involve to interviewing displaced people from Ukraine to better understand the health impact of the war experiences during and after their transition to host countries.

We are also always open to any suggestions for new topics and collaborations!!

Thanks to Drs Susan Law, Ilja Ormel & Ana Keller for the information provided for this interview.



Health Experiences [Fall newsletter](#)

Contact for recruitment

- email : info@healthexperiences.ca
- or through the [website](#)

CANCER RESEARCH RECRUTEMENT UPDATE

ONCOLOGY COMMUNITY CHAIR RECRUITMENT UPDATE

St. Mary's Hospital Center and McGill University have partnered to establish the McGill University Research Chair in Community Cancer Care at St. Mary's Research Centre.

The selection process for this position is structured following McGill University procedures and policies for academic recruitment. The posting which was published for 60 days on the McGill website, University Advancement and international journals is now closed. We are happy to report that a total of 13 applications were received. The selection committee will now proceed with evaluating the applications.

ASSISTANT PROFESSOR - CANCER EPIDEMIOLOGY & QUALITATIVE METHODOLOGY UPDATE

The Gerald Bronfman Department of Oncology (GBDO) at McGill University and St-Mary's Research Centre have partnered to establish a new Assistant Professor (Research) position in the area of cancer epidemiology and quantitative methodology.

The successful candidate will be expected to contribute to enriching the academic and educational missions of both the university and the Research Centre. The candidate will be responsible for developing research activities and to contribute to classroom teaching and graduate student supervision. The selection committee will now proceed with evaluating the applications.

Selection Committee

- Dr. Ari Meguerditchian, SMRC, (Selection Committee Chair)
- Ms Najia Hachimi-Idrissi, Interim CEO, CIUSSS_ODIM
- Ms Beverley Tracey John, Director of Nursing, CIUSSS_ODIM
- Dr. Adrian Langleben, Director of Oncology & Hematology CIUSSS-ODIM
- Dr. Eduardo Franco, McGill University
- Dr. Shari Baum, Chair, GBDO, McGill University
- Dr. Robyn Tamblyn, Associate Dean of Research, Faculty of Medicine, McGill University
- Dr. Sylvie Lambert, SMRC
- Ms Judy Martin, community partner

Selection Committee

Dr. Ari Meguerditchian, Scientific Director, SMRC
Dr Eduardo Franco, Chair, GBDO
Dr. Josée Dupuis, Chair, Department of Epidemiology, Biostatistics and Occupational Health
Dr. Jeannie Haggerty, SMRC, Department of Family Medicine
Dr. Armen Aprikian GBDO, Department of Surgery
Dr. Argerie Tsimicalis, Ingram School of Nursing

These funding are made possible by the St. Mary's Hospital Foundation which is committed to supporting programs, projects and healthcare professionals for the advancement of St. Mary's Hospital patient care, research and teaching.



Centre de recherche de St. Mary
St. Mary's Research Centre



FONDATION DE
L'HÔPITAL
ST. MARY

ST. MARY'S
HOSPITAL
FOUNDATION



McGill

RESEARCH CENTRE STRATEGIC EXERCISE 2022

During the first week of November a research strategy formulation exercise was launched.

Why a strategic exercise?

The SMRC is uniquely positioned within the network of McGill's health and life science institutions because of its focus on underserved and high-value research areas such as:

- Primary care
- Community partnerships towards better health
- Marginalized/underserved populations
- High-risk patients/high-risk situations
- Patient-centered, patient-empowering interventions
- Interventions that promote proximity of care

Goals

- Clarify our vision
- Map out pillars and arches of research
- Identify research developments and opportunities
- Facilitate planning and investments based on needs
- Maximize resource use
- Grow and retain talent
- Provide a comprehensive view of academic productivity

Nature of Project and objectives

The SMRC aims to become a full-fledged, formally recognized member of the province's research network, leading academic excellence and scientific advancement in areas of expertise within the St. Mary's community. This strategy formulation exercise is an essential part of achieving this objective.



Oct - Nov 2022 Online survey

Nov - Dec 2022 Roll out of approximately 8 research reflection workshops (online)

Dec - Jan 2023 Summary workshops - Harvest of information, consolidation of findings

Mar - Apr 2023 Presentation of SMRC strategy

ROSTER OF ACHIEVEMENT ONCOLOGY CLINICAL TRIALS

Bladder cancer

A Phase 3, randomized, study of neoadjuvant chemotherapy alone versus neoadjuvant, chemotherapy plus Nivolumab or Nivolumab and BMS-986205, followed by continued post- surgery therapy with Nivolumab and BMS-986205 in participants with muscle-invasive bladder cancer. [CA017-078]

Breast cancer

"A Clinical Trial to Determine the Efficacy of Five Years of Letrozole Compared to Placebo in Patients Completing Five Years of Hormonal Therapy Consisting of an Aromatase Inhibitor (AI) or Tamoxifen Followed by an AI in Prolonging Disease-Free Survival in Postmenopausal Woman with Hormone Receptor Positive Breast Cancer" [NSABP-42]

A Randomized Phase III Trial of Adjuvant Therapy Comparing Chemotherapy Alone (Six Cycles of Docetaxel Plus Cyclophosphamide or Four Cycles of Doxorubicin Plus Cyclophosphamide Followed by Weekly Paclitaxel) to Chemotherapy Plus Trastuzumab in Woman With Node- Positive or High-Risk Node-Negative HER2-Low Invasive Breast Cancer [NSABP-47]

A Phase III Study of Trastuzumab Deruxtecan (T-DXd) with or without Pertuzumab vs Taxane, Trastuzumab and pertuzumab in HERs-Positive, first-line Metastatic Breast Cancer [Destiny]

A Phase III, Randomized Open-Label Multicenter Study Evaluating the Efficacy and Safety of Adjuvant Giredestrant compared with Physicians Choice of Adjuvant Endocrine Monotherapy in patients with Estrogen Receptor-Positive HER-Negative Early Breast Cancer [TRIO045]

Identification and evaluation of patients at risk of developing cardiotoxicity after receiving chemotherapy for breast cancer, leukemia or lymphoma [CarChem]

Lung cancer

A Phase 3 Study of Pembrolizumab in Combination with Pemetrexed/Platinum (Carboplatin or Cisplatin) Followed by Pembrolizumab and Maintenance Olaparib vs Maintenance Pemetrexed in the First-Line Treatment of Participants with Metastatic Non squamous Non-Small-Cell Lung Cancer [MK7339-006]

A Phase 3 Study of Pembrolizumab in Combination with Carboplatin/Taxane (Paclitaxel or Nab-paclitaxel) Followed by Pembrolizumab with or without Maintenance Olaparib in the First-line Treatment of Metastatic Squamous Non-small Cell Lung Cancer (NSCLC) [MK7339-008]

A Phase 3 Randomized, Placebo-controlled Study to Evaluate the Safety and Efficacy of Pemetrexed + Platinum Chemotherapy + Pembrolizumab (MK-3475) with or without Lenvatinib (E7080/MK-7902) as First-line Intervention in Participants with Metastatic Non squamous Non-small Cell Lung Cancer [MK7902-006]



ROSTER OF ACHIEVEMENT ONCOLOGY CLINICAL TRIALS

Lung cancer - continued

A Phase 3 Study of Pembrolizumab in Combination with Pemetrexed/Platinum (Carboplatin or Cisplatin) Followed by Pembrolizumab and Maintenance Olaparib vs Maintenance Pemetrexed in the First-Line Treatment of Participants with Metastatic Non squamous Non-Small-Cell Lung Cancer [MK7339-006]

A Phase 3 Study of Pembrolizumab in Combination with Carboplatin/Taxane (Paclitaxel or Nab-paclitaxel) Followed by Pembrolizumab with or without Maintenance Olaparib in the First-line Treatment of Metastatic Squamous Non-small Cell Lung Cancer (NSCLC) [MK7339-008]

A Phase 3 Randomized, Placebo-controlled Study to Evaluate the Safety and Efficacy of Pemetrexed + Platinum Chemotherapy + Pembrolizumab (MK-3475) with or without Lenvatinib (E7080/MK-7902) as First-line Intervention in Participants with Metastatic Non squamous Non-small Cell Lung Cancer [MK7902-006]

A Phase 3, Multicenter, randomized, open-label trial to compare the efficacy and safety of pembrolizumab (MK-3475) in combination with Lenvatinib (E7080/MK-7902) versus docetaxel in previously treated participants with metastatic Non-small cell lung cancer (NSCLC) and progressive disease (PD) after platinum doublet chemotherapy and immunotherapy [MK7902-008]

A phase 3 study of Pembrolizumab (MK-3475) in combination with concurrent chemoradiation therapy followed by Pembrolizumab with or without Olaparib vs concurrent chemoradiation therapy followed by Durvalumab in participants with unresectable, locally advanced, stage III non-small cell lung cancer (NSCLC). [MK 7339-012]

A randomized, double-blind, placebo-controlled phase 3 study of Pembrolizumab (MK-3475) in combination with concurrent chemoradiation therapy followed by Pembrolizumab with or without Olaparib (MK-7339), compared to concurrent chemoradiation therapy alone in participants with newly diagnosed treatment-naïve limited-stage small cell lung cancer (LS-SCLC). [MK 7339-013]

A Phase 1b/2 Study to evaluate the efficacy and safety of Pembrolizumab in Combination with Investigational Agents for the treatment of Participants With PD-1/L1-refractory Extension-Stage Small Cell Lung Cancer in need of Secondary-Line Therapy [MK3475-B98]

A Phase 2 Study to Evaluate the Efficacy and Safety of Pembrolizumab plus Investigational Agents in Combination with Etoposide and Cisplatin or Carboplatin for the first line Treatment of Participants with Extensive Stage Small Cell Lung Cancer [MK3475-B99]

A Randomized Open Label Phase 3 Study of SAR408701 vs Docetaxel in Previously treated Metastatic Non-Squamous Non-Small Cell Lung Cancer patients with CEACAM5 Positive Tumors [EFC15858]



Information:
Franca Cantini
Program Manager, Oncology Clinical Trials
franca.cantini.comtl@ssss.gouv.qc.ca

STAFF NEWS

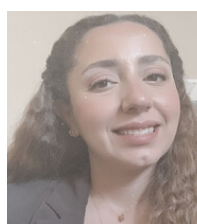
New staff in the e-IMPAQc initiative led by Dr. Sylvie Lambert



Anita Slominska is a Qualitative Research Assistant. Anita has recently graduated from Western University in Ontario with a PhD in Health Information Science, with research experience in narrative medicine and organ transplantation as well as in the development and evaluation of mHealth tools. In her role, she will contribute to data collection and analysis for the immunotherapy sub-project and the implementation study.

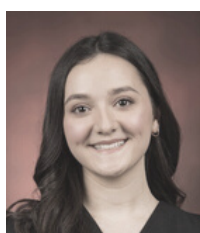


Laurelei Berniard joins as a Qualitative Analyst. She works on the development of the e-IMPAQc initiative in various projects under the supervision of Mona Magalhaes. Previously, Laurelei worked on writing an article about loneliness. Laurelei is currently writing a master's thesis in sociology at the Université de Montréal.



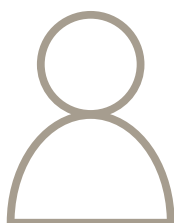
Zen Mallouk is working on recruitment of patients at several hospital sites as well as data collection, summary, and other administrative tasks. Before joining the e-IMPAQc team, she worked on several research projects in the field of Psychology and Psychiatry. She also worked as a clinical and community psychologist in several non-governmental organizations and humanitarian settings including UNICEF. Zen is currently a doctorate student in clinical psychology. She is also working as a case worker manager developing a health and wellness department at the refugee center in Montreal. [LinkedIn](#)

New staff in Oncology Research led by Dr. Adrian Langleben



Gabrielle Charron joins as a new Clinical Regulatory Coordinator. She recently graduated from McGill University, with a BA in Political Science and History. Her responsibilities include communicating with study sponsors and the REB, aiding in study initiation, and managing recordkeeping systems.

New staff in Orthopaedics Research led by Dr. Anthony Albers



Nawel Akli joined the Orthopaedics research team as Research Assistant for the Block Research Study led by Dr. Anthony Albers. Nawel contributes to the recruitment: she identifies potential participants, explains the purpose of the study and obtains their consent. She is also responsible for keeping track of data and the follow-ups. Outside SMH, Nawel works as a Screening Technician for a pharmaceutical contract research organization (CRO). Nawel holds an undergraduate degree in Biochemistry and Molecular Medicine from the Université de Montréal. She is currently specializing in drug development (graduate diploma). [LinkedIn](#)

SMRC NEWS - LIFT CHALLENGE



SMRC FALL LIFT CHALLENGE AT PARC MAISONNEUVE

The Fall Lift challenge was launched at Parc Maisonneuve in Montreal on October 11, 2022. From 11am to 12pm, ten participants and 3 doggies walked 2.9km (4000 steps) loop on a gorgeous fall day. The activity was followed by a pic-nic.

Ilja Ormel (Healh
Experiences) and
Vanessa Williams (e-
IMPAQc)



Isabelle Crépeau (Administration)



Sandhya Baskaran (Orthopaedics Research)
with Scamper, Jean-Daniel Beauchesne
(Administration) with Louis and Eric Belzile
(Statistics) with Youki



Amaryllis Kaneza (Administration), Victoria
Wicks (MA student) and Maddie Leggatt (MA
Student)

SMRC NEWS - LIFT CHALLENGE



Thank you to all the participants for this 4-week challenge: Sandhya Baskaran, Jean-Daniel Beauchesne, , Isabelle Crépeau, Rachelle Dumas, Cindy Ibberson, Olivia lenaro Sylvie Lambert, Madison Leggatt, Olivia Lenoria, Christina Raneburger, Mitra Vaezi and Victoria Wicks. Congratulations to all!

CONGRATULATIONS



**Olivia
lenaro**



**Madison
Leggatt**



**Victoria
Wicks**



Participants

12



Sessions completed this week

125



Total sessions completed

475



Total hours spent training

498



Average session duration

62.9 min



Popular time of day for activities

Morning: 28.2%
Noon: 22.5%
Evening: 49.3%

Top Trending Activities

Walking/Running: 63.7%

Cycling/Spinning: 2.7%

LIFT session: 1.9%

Yoga: 1.5%

HIIT/Bootcamp: 1.3%

Hiking: 1.0%

Gym/Weightlifting: 1.0%

ACADEMIC OUTPUT

Best Poster Presentation

Nina Morena, PhD candidate, was awarded the best e-poster presentation award at the Canadian Society of Surgical Oncology (CSSO) Annual Spring Meeting for "Are YouTube videos a reliable information source for young women with metastatic breast cancer? The [abstract](#) of her research was recently published in the Journal of Clinical Oncology.

Grant awarded

Dr Maryse Larouche is co-investigator on a grant led by Drs Roxane Geoffrion and Lina Roa: Psychosexual and physiotherapy intervention for sexual health after childbirth trauma.
Funding agency: Women's Health research Institute at BC Women's – 2022 Graduate and Fellowship Award in Women's Health
Amount received: \$21,000, 1 year

Publication

Cetin-Sahin D, Ducharme F, McCusker J, Magalhaes M, Veillette N, Lachance P-A, Cossette S, Vadeboncoeur A, Mah R. Vu TTM, Berthelot S..[Key Healthcare Providers' Perspectives on the Implementation of Senior-Friendly Emergency Department Care in Quebec](#), Journal of Geriatric Emergency Medicine, 3(3), Article 4. 2022. DOI: 10.17294/2694-4715.1033

Busque AA, Belzile E, Rodrigues J, Larouche M. [Major surgical complications of benign gynecologic procedures at a university-affiliated hospital](#). McGill Journal of Medicine. 2023;21(1) DOI: 10.26443/mjm.v21i1.960

EMPLOYMENT OPPORTUNITIES

- [e-IMPAQc - Site Coordinator](#)
- [eIMPAQc - Research Assistant](#)

THURSDAYS KNOWLEDGE TRANSFER EVENTS 12PM-1PM

<https://us02web.zoom.us/j/409644888>

November

17 - [Bonnie Barnett, MA](#)
Knowledge transfer and innovation:
Your partner in research

24 - [Taylor Wasserman, B.Sc.](#)
Lessons learned implementing innovative
knowledge translation for cancer care for e-
IMPAQc

December

15 - [Guillaume Fontaine, PhD](#)
An introduction to implementation science
and an overview of key considerations for
successful implementation efforts