

St. Mary's Research Centre

Septembre / September 2021



Dear colleagues and members of the SMRC community,

I hope you've enjoyed the summer to rest and recharge. As you will see with the September edition of the newsletter, the beautiful weather and eased restrictions did not prevent the Research Centre from excelling. Whether it's through service to the hospital, University, Ministry of Health or through scholarly productivity, our researchers continue to shine on every front. I'd like to point out the recent appointment of Dr Sylvie Lambert as Associate Director – Research at the Ingram School of Nursing. Through this position, she will be able to put her expertise in patient-centred research innovations to the service of the McGill nursing community at large.

I also want to highlight the contributions of another Ingram alumni, Gina Costanzo, our Research Centre Manager. In partnership with the Finance Directorate of the hospital and the Faculty of Medicine (McGill), during the summer months, Gina engaged in the complex task of updating finance processes at the Research Centre. Being able to effectively transact funds is key to the health of our Research Centre, and the impact of her meticulous work

is already palpable.

During the summer, the Research Centre initiated a reflection on how to structure remote work as a permanent reality for some of its members. The COVID-19 pandemic has allowed us to assess the feasibility of contributing to the SMRC from outside its walls. It's important to plan the work reorganisation that this will result in once emergency measures are lifted. That being said, for the moment, with the 4th wave in full progress, I encourage everyone to continue rigorously applying public health recommendations: wear your mask, wash your hands, and vaccinate.

Stay safe,

Ari Meguerditchian
Scientific Director, SMRC

New grants

Lambert SD, Faria R, Langleben A, Esfahani K, Ghali S, Buhlaiga N, Quinn A, Zordan T. Implementing an electronic patient-reported outcome symptom screening and management program for tailored treatment and care of women with metastatic breast cancer. Pfizer Canada; Rethink Breast Cancer. Grant awarded July 26, 2021.

SMRC beyond the walls



the CanDirect



Jane McCusker and [Marie-Ève Pelland](#) (CHUM) were invited by the Canadian Cancer Survivorship Research Consortium to give a [webinar](#) on June 18. They presented the CanDirect intervention, a telephone-supported depression self-care intervention for cancer survivors provided by trained lay coaches. This intervention was found to improve depression outcomes in a randomized trial that compared it to care as usual.



On July 22, **Manon de Raad** and **Lydia Ould Brahim** met with members of the [Montreal and West Island Prostate Cancer Support Group](#) to share updates around self-care interventions and to brainstorm ideas on how programs could be implemented in the real world. This organization has partnered with SMRC to support recruitment for the CanDirect (PI Jane McCusker) and TEMPO (PI Sylvie Lambert) trials. **Cindy Ibberson** has been instrumental in building ties with this important partner over the years.

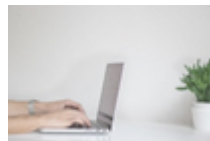


PhD student **Nina Morena** (Dr. Ari Meguerditchian) was invited to present her findings in a presentation entitled: “Gender, Health, and Media: Deconstructing the Breast Cancer Information Problem” at the Feminist Health Research Conference, happening in Montreal, August 28-29. This literature review explores the connections between the social, political, and gendered dimensions of breast cancer and the current online information environment, which is prone to misinformation, and considers how these phenomena affect patient experience and influence the healthcare trajectory. Learn more about Nina’s research on [McGill University graduate students page](#).



Diana Nguyen, Dr. Meguerditchian’s Research Assistant, had an abstract accepted for poster presentation at two conferences in September: the Canadian Surgery Forum Virtual Conference (September 21-24) and the American Society of Clinical Oncology Quality Care Symposium (September 24-25): “Fertility preservation in young breast cancer patients: A population-based study”. This retrospective longitudinal cohort study observes the rate of access and use of fertility preservation services amongst young women with breast cancer (YWBC). The study period ranges from 2012-2018 in Quebec; it includes all YWBC under the coverage of the provincial universal healthcare program (RAMQ).

Remote Work Task Force



In August a Remote Work Task Force was established to optimize deployment and maintenance of remote work during the 4th wave. Chaired by Research Centre Manager, Gina Costanzo and composed of SMRC scientists, research assistants and administrative staff, the task force will also guide the reflection on how to develop a permanent remote work policy. The Research Centre community will be broadly consulted on the Task Force recommendations. For any suggestion please contact gina.costanzo@ssss.gouv.qc.ca

Photo credit : « person using laptop » : Nordwood Themes, Unplashd

SMRC on LinkedIn



During the month of July, SMRC benefited from the knowledge and advice of [Sam Freder](#), social media intern at SMRC. Sam helped to create a [new LinkedIn page](#) for the research center. He also advised our staff and researchers who wished to enhance their visibility on social media. Please visit and connect!

SMRC Staff – News



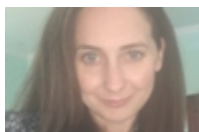
Dr. Ari Meguerditchian

Dr Meguerditchian moves forward with leadership activities and service to the university. He was recently appointed to the Tomlinson Award Committee (Department of Surgery, McGill). This committee advises the Department of Surgery at McGill on the academic career progress of recent recruits. He was also invited to join the Awards Committee of the Gerald Bronfman Department of Oncology (McGill). In addition to adjudicating the Kuok Fellowship, this committee advises the Chair of Oncology on recognizing peers who excel in their duties.



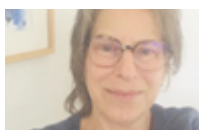
Sylvie Lambert

Dr. Sylvie Lambert was appointed as researcher to the steering committee of the « Observatoire québécois de la proche aidance ». The Observatory's mission is to collect and structure reliable and objective information in caregiving through observation, monitoring, analysis and knowledge sharing. Dr Lambert will also taking over the Ingram School of Nursing directorship of Research. Through her international leading-edge research experience and interventions, Sylvie will be an important ally to fostering excellence in scholarship, research and innovation within nursing at McGill. [LinkedIn Profile.](#)



Gina Costanzo

Gina Costanzo completed her MBAe at Université de Sherbrooke in June. As manager of SMRC, Gina acquired a competency-based approach in the context of real situations. Her strenght is her ability to mobilize a combination of knowledge, experience and skills to face the challenges of current and future management of our research center. Gina is a Registered Nurse. She graduated from McGill University Ingram School of Nursing where she specialized in maternal / child health and neonatal nursing. "I believ that small steps can make great impacts every day." [LinkedIn Profile](#)



Isabelle Crépeau

Isabelle Crépeau has been appointed Scientific Information Officer. She will support the management of scientific information, collaborate in the communications, support coordination of knowledge transfer activities & grant applications, and collaborate in archiving and general support activities. Isabelle holds a Master in Library and Information Studies from McGill University. "I am delighted to to use my

experience as a librarian and information specialist to consolidate, organize and disseminate the information and knowledge created by our researchers".
[LinkedIn profile](#)

New faces at SMRC



Jannay Ballantyne is joining Jeannie Haggerty's team as Research Administrative Assistant. She holds a BA in Sociology from the University of Ottawa. She has since been working in the administrative field. Her current research interests include the health care sector and the study of the demographics of those in marginalized communities who have trouble accessing health care. She has also developed a deep interest in statistics, which she hopes to become more involved in and make use of in the near future. Welcome Jannay!

Recently published



Boureau M, **Ould Brahim L**, **Apedaile D**, Wasserman S, **Magalhaes M**, **Belzile E**, Frati F.Y.E., **Lambert S**. (2021). [Evaluation of online, publicly available cancer-related educational and self-management resources for symptom management](#). *Psychooncology*. DOI: 10.1002/pon.5756



Lambert SD, Schaffler JL, **Ould Brahim L**, **Belzile E**, Laizner AM, Folch N, **Rosenberg E**, Maheu C, Ciofani L, Dubois S, Gelinas-Phaneuf E, Frouin S, Leung K, Tremblay S, **Clayberg K**, **Ciampi A**. (2021). [The effect of culturally-adapted health education interventions among culturally and linguistically diverse \(CALD\) patients with a chronic illness: A meta-analysis and descriptive systematic review](#). *Patient Education and Counseling*, 104(7):1608-1635.



Lambert S, **Ould Brahim L**, **McCusker J**, Coumoundouros C, Audet LA, **Yaffe M**, Kayser J, **Magalhaes M**, **Belzile E**, Turner N. (2021). [Non-pharmacological interventions for caregivers with depression and caregivers of care recipients with co-morbid depression: A systematic review and meta-analysis](#). *J. General Internal Medicine*. DOI: 10.1007/s11136-020-02750



Law S, **Ormel I**, Babinski S, Plett D, Dionne E, **Schwartz H**, Rosmovitz L. (2021). [Dread and solace: Talking about perinatal mental health](#). *Int J Mental Health Nursing*. DOI: 10.1111/inm.12884.



Loban E, Scott C, Lewis V, Law S, Haggerty J. (2021) [Activating partnership assets to produce synergy in primary health care: A mixed methods study.](#) *Healthcare* (Special Issue of Special Issue Health Care Management and Cost Estimation). 9(8):1060.



Ormel I, Onu CC, Magalhaes M, Tang T, Hughes JB, Law S. (2021). [Using a mobile app-based video recommender system of patient narratives to prepare women for breast cancer surgery: Development and usability study informed by qualitative data.](#) *JMIR Formative Research*. 5:e22970.



Yaffe MJ. [Content and analysis of a knowledge translation activity for an elder abuse detection tool: A descriptive study](#) (2021). *BMC Geriatrics*. 21:455.

Are you a healthcare provider or community organization in Quebec involved with patients who have completed primary cancer treatment?

e-IMPAQc is developing a program to improve the screening and management of symptoms and concerns of patients during the after treatment phase and **we are recruiting:**

- Clinicians involved in reviewing patients' reported symptoms and ensuring follow-up
- Representatives of community-based organizations who offer support to those who have completed cancer treatment

Participate in two 90-minute workshops and one 120-minute workshop over a period of 12 months starting in summer 2021

Participants will receive \$60/hour of participation in appreciation of their contribution

 e-IMPAQc

To learn more, visit www.e-impaqc.com/after-treatment-study or contact us at e-impaqc_posttt@mcgill.ca

Lunch & Learn

<https://us02web.zoom.us/j/409644888>

September 16, 2021

La participation citoyenne au CIUSSS ODIM :

Le Bureau du citoyen partenaire

Marie-Brigitte Dukuze

Agente de planification, de programmation et de recherche

Bureau du citoyen partenaire

September 30, 2021

Copyright Transfer agreement workshop

Jessica Lange MLIS, McGill University

Copyright © 2021

St. Mary's Research Centre / Centre de recherche de St. Mary

September Newsletter

research.stmary@ssss.gouv.qc.ca