

# St. Mary's Research Centre

APRIL 2022

## FROM THE SCIENTIFIC DIRECTOR



Dear members of the SMRC community,

The April issue of the Research Centre newsletter is synchronized with the annual reporting exercise.

Having reviewed our productivity during another difficult year, I can confidently say that we can be proud of what's been accomplished. Our teams were able to generate new grant funding, publish 19 papers and get 25 oral and 6 poster presentations; a significant accomplishment, considering the restricted access to research facilities and direct patient care areas. Highlights of the annual report can be found in this issue of the newsletter, the full report will be released in the coming weeks.

In line with St-Mary's philosophy of care, the Research Centre continues to expand its leadership in patient-centered scientific development. Dr Sylvie Lambert recently received a CIHR Catalyst grant as co-investigator, to explore the impact of implementation of digital PROMs for the management of chronic diseases. Knowledge generated from this research will allow primary care specialists to optimize the integration of PROMs towards better health for their patients.

In addition, Researchers for the SMRC have been invited to present their findings at the McPeak-Sirois Breast Cancer Colloquium, which brings together scientists, clinicians and patients invested in optimizing province wide breast cancer care by expanding access to clinical trials and quality initiatives.

Our successes reflect the dedication of the over 60 research professionals that constitute the SMRC community. I want to thank everyone for their commitment, and look forward to further growth.

Ari Meguerditchian, MD  
Scientific Director, SMRC

### IN THIS ISSUE

Snapshot Annual  
Report - 2

SMRC & Staff News - 3

Academic Output - 4

Colloquium  
"La recherche qui  
soigne" - 5

Oncology  
Clinical Trials - 6

Researcher  
Portrait - 7

Events - 8

Funding  
Opportunities - 9

# SMRC: A RESEARCH CENTRE AS STRONG AS ITS COMMUNITY OVERVIEW 2021-2022

The SMRC Annual Report 2020-21 will be released on April 15, 2022  
Full version available [here](#)

Conducting high quality research on primary and community care since 1993

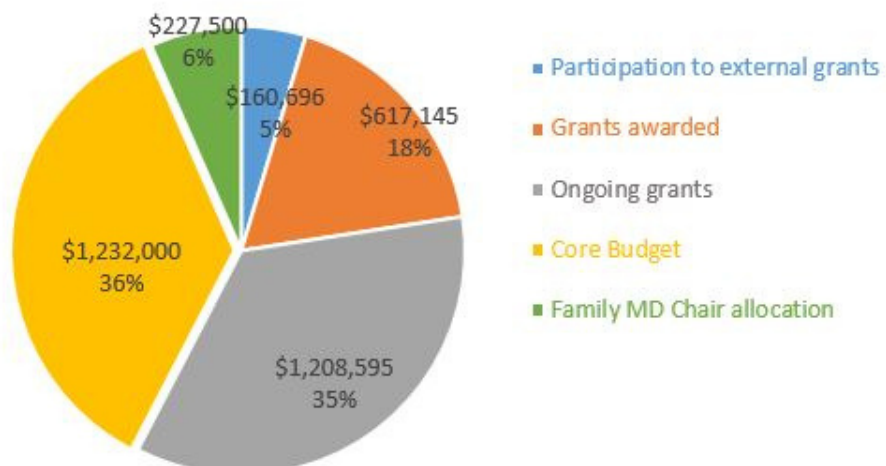
Core staff: 7  
Scientists : 5  
Clinician scientists : 23  
Research professionals: 63  
Graduate students: 23

Excellence through the application of scientific evidence

Oncology clinical trials :16  
Orthopaedic research projects and clinical trials: 5  
Urogynecology clinical trials: 4

Supporting evidence-based decision-making through knowledge exchange activities with and for clinical leaders

New grants : 7  
Scientific publications : 19  
Oral presentations : 25  
Poster presentations : 6  
Published abstracts: 9  
Knowledge exchange events : 15  
Consultation requests: 13



## SMRC NEWS

### THE WAY FORWARD

#### PROPULSION RH

St.Mary's Research Centre is proud to announce a partnership with HR Propulsion to review internal HR strategies. Together, we will be looking at offering our employees updated contracts and salary scales as well as improved benefits across our members

#### INTERIM IN MANAGEMENT

Jean-Daniel Beauchesne accepted to take on the role of Interim General Manager. As Finance Officer, Jean-Daniel has developed an in-depth knowledge of active projects and is well positioned to manage the complexity of running research operations during this transition period.

#### SMRC WELLNESS CHALLENGE



We are excited to announce that St.Mary's Research Centre has partnered with LIFT session to launch the SMRC 2022 Wellness Challenge!

From April 15th to May 13th staff will be able to challenge themselves and their colleagues in a wellness challenge that will help develop and maintain healthy habits. Four teams, will be created, Staff will meet new coworkers along the way, have the opportunity to get active.

## STAFF NEWS



**Amaryllis Kaneza** joined the Management Team on March 28 as Administrative Assistant. She has worked at Computershare and Globe Union and with senior executives at Ecobank Burundi. Amaryllis Kaneza can be reached at [amaryllis.kaneza.comtl@ssss.gouv.qc.ca](mailto:amaryllis.kaneza.comtl@ssss.gouv.qc.ca)

# ACADEMIC OUTPUT

## Grants awarded

Sasseville M, Leblanc A, Groulx A, Hudon C, Lambert SD, Gagnon M, Ashcroft R, Breton M, Poitras ME, Pluye P, Wong S, Paquette J-S, Beaudet N, d'Anjou N, Langlois S. Clinical integration of patient-reported outcomes in primary healthcare: A systematic review (inPR1nt). Catalyst Grant: Quadruple Aim and Equity, Canadian Institutes of Health Research (CIHR), \$99,810 CAD 1 year

## Peer-reviewed and other publications

Bining M, Wasserman S, Ould Brahim L, Belzile E, Magalhaes M, Lambert SD. [An evaluation of publicly available smartphone apps to support unpaid cancer caregivers](#). J Pain Symptom Manage, 63 (3), 430-439, 2022.

McCusker J, Lambert SD, Ciampi A, Jones JM, Li M, Yaffe MJ, Pelland M.-E, Belzile E, De Raad M. [Trained lay coaches and self-care cognitive-behavioral tools improve depression outcomes](#). Patient Education and Counseling, 2022. DOI: <https://doi.org/10.1016/j.pec.2022.03.021>

Jamjoum G, Araji T, Nguyen D, Meguerditchian, AN. Predictors of complication after groin dissection: a contemporary experience. [Online publication]. American Society of Clinical Oncology (ASCO), Annual Meeting, Chicago IL. June 3-7, 2022.

## Upcoming short presentations and posters

Morena N, Ahisar Y, Wang X, Nguyen D, Rentschler CA, Meguerditchian AN. Are YouTube videos a reliable information source for young women with metastatic breast cancer? [Short presentation]. Canadian Society of Surgical Oncology (CSSO) Annual Spring Meeting, Toronto ON. April 29, 2022

Jamjoum G, Araji T, Nguyen D, Meguerditchian, AN. Predictors of complication after groin dissection: a contemporary experience. [Short presentation]. Canadian Society of Surgical Oncology (CSSO) Annual Spring Meeting, Toronto ON. April 29, 2022

Morena N, Ahisar Y, Wang X, Nguyen D, Rentschler CA, Meguerditchian AN. Are YouTube videos a reliable information source for young women with metastatic breast cancer? [Poster display]. European Society for Medical Oncology (ESMO) Breast Cancer Congress Berlin, Germany. May 3-5, 2022.

## Academic output in April at SMRC

Grants awarded

1

Manuscript published

2

Abstracts accepted

7

Morena N, Ahisar Y, Wang X, Nguyen D, Rentschler CA, Meguerditchian AN. Are YouTube videos a reliable information source for young women with metastatic breast cancer? [Poster]. American Association of Clinical Oncology (ASCO) Annual Meeting, Chicago IL. June 3-7, 2022.

Jamjoum G, Araji T, Nguyen D, Meguerditchian, AN. Predictors of complication after groin dissection: a contemporary experience. [Poster]. Committee of the Celebration of Research and Training in Oncology (CORTO) and McGill's Gerald Bronfman Department of Oncology, Montreal QC. May 4, 2022

Morena N, Ahisar Y, Wang X, Nguyen D, Rentschler CA, Meguerditchian AN. Are YouTube videos a reliable information source for young women with metastatic breast cancer? [Poster]. Committee of the Celebration of Research and Training in Oncology (CORTO) and McGill's Gerald Bronfman Department of Oncology, Montreal QC. May 4, 2022

# ACADEMIC OUTPUT

## Upcoming presentations & panel discussions

Belval JR, Lambert SD, Mille C-A et al. An ID card allowing access to municipal services for migrants with precarious status in Montreal and its influence on social inclusion: A Mixed methods study. [Panel discussion]

<https://iuhpe2022.com>, International Union for Health Promotion and Education: Promoting Policies for Health, Well-being, and Equity, Montreal, Qc, Canada. May 15-19 2022

Larouche M, Mo S, Lachance C, Walter E. The intra-operative crede maneuver to detect latent stress urinary incontinence: Technique and outcomes. [Video presentation]. The Society of Obstetricians and Gynaecologists of Canada/Annual Clinical and Scientific Conference 2022; June 7-10; Quebec City, Canada, 2022

## LA RECHERCHE QUI SOIGNE

## BREAST CANCER IN FOCUS

Have you or a loved one been touched by breast cancer? Would you like to learn more about clinical research and resulting innovative treatments? The McPeak-Sirois Group—one of Canada's leading consortiums specializing in breast cancer research invites you to La recherche qui soigne symposium.

**Saturday, April 30, from 9:00 a.m. to 2:30p.m**

(in person or online)

[Program & Registration](#)



The presenters includes scientists and clinicians from the SMRC:

L'utilisation des résultats rapportés par les patients (« PRO »): Un incontournable pour une gestion personnalisée et efficace des symptômes éprouvés par les femmes atteintes d'un cancer du sein

Sylvie Lambert, PhD

L'adhérence aux meilleures pratiques dans le traitement du cancer du sein : les données au service de la patiente

Dr. Ari Meguerditchian



# ONCOLOGY CLINICAL TRIALS

## Lung cancer

A phase 3 study of Pembrolizumab (MK-3475) in combination with concurrent chemoradiation therapy followed by Pembrolizumab with or without Olaparib vs concurrent chemoradiation therapy followed by Durvalumab in participants with unresectable, locally advanced, stage III non-small cell lung cancer (NSCLC). [MK 7339-012]

A randomized, double-blind, placebo-controlled phase 3 study of Pembrolizumab (MK-3475) in combination with concurrent chemoradiation therapy followed by Pembrolizumab with or without Olaparib (MK-7339), compared to concurrent chemoradiation therapy alone in participants with newly diagnosed treatment-naïve limited-stage small cell lung cancer (LS-SCLC). [MK 7339-013]

A phase 2 precision oncology study of biomarker-directed, Pembrolizumab- (MK-3475, SCH 900457) based combination therapy for advanced non-Small cell lung cancer (KEYNOTE-495; KeyImPaCT). [MK-3475-495]

## Bladder cancer

A Phase 3, randomized, study of neoadjuvant chemotherapy alone versus neoadjuvant, chemotherapy plus Nivolumab or Nivolumab and BMS-986205, followed by continued post- surgery therapy with Nivolumab and BMS-986205 in participants with muscle-invasive bladder cancer. [CA017-078]

## Breast

An Open-label, Randomized, Multicenter Study Evaluating the Activity of Lasofoxifene Relative to Fulvestrant for the Treatment of Pre- and Postmenopausal Women with Locally Advanced or Metastatic ER+/HER2- Breast Cancer with an ESR1 Mutation(Sermonix SMX-18-001)

"A Clinical Trial to Determine the Efficacy of Five Years of Letrozole Compared to Placebo in Patients Completing Five Years of Hormonal Therapy Consisting of an Aromatase Inhibitor (AI) or Tamoxifen Followed by an AI in Prolonging Disease-Free Survival in Postmenopausal Woman with Hormone Receptor Positive Breast Cancer" (NSABP-42)

A Randomized Phase III Trial of Adjuvant Therapy Comparing Chemotherapy Alone (Six Cycles of Docetaxel Plus Cyclophosphamide or Four Cycles of Doxorubicin Plus Cyclophosphamide Followed by Weekly Paclitaxel) to Chemotherapy Plus Trastuzumab in Woman With Node- Positive or High-Risk Node-Negative HER2-Low Invasive Breast Cancer (NSABP-47)

## Gastric

A Phase 3, Global, Multi-Center, Double-Blind, Randomized, Efficacy Study of Zolbetuximab (IMAB362) Plus mFOLFOX6 Compared with Placebo Plus mFOLFOX6 as First-line Treatment of Subjects with Claudin (CLDN)18.2- Positive, HER2-Negative, Locally Advanced Unresectable or Metastatic Gastric or Gastroesophageal Junction (GEJ) Adenocarcinoma (Astellas SPOTLIGHT)

Contact information: [franca.cantini.comtl@ssss.gouv.qc.ca](mailto:franca.cantini.comtl@ssss.gouv.qc.ca)

## RESEARCHER PORTRAIT: Dr. MORENO MORELLI

Dr. Morelli obtained his medical degree from the Université de Montréal, where he also completed his residency in Orthopaedic Surgery. He subsequently completed his first fellowship in Sport Medicine – Knee pathology at the University of Ottawa followed by a second fellowship at the University of Toronto in Sport Medicine – Shoulder and Knee pathology. After five years of community practice in Ontario, he returned to Montreal and joined the staff at St. Mary's Hospital where he is actively involved in resident teaching.



He is also a member of the Residency Programme Committee that is responsible for the establishment of the training curriculum of future Orthopaedic Surgeons. He is currently an Orthopaedic Consultant for the Cirque du Soleil and is the Medical Director of the FIFA Centre of Medical Excellence in Montreal.

### Specialties:

- Arthroscopic, reconstructive and Joint replacement of the shoulder;
- Arthroscopic and reconstructive surgery of the knee



April 5, 2022 - Oncology Nursing Day

SMRC wishes to congratulate Oncology nurses. You are not only on the front lines of cancer treatment and care, you are also vital to research projects like ours.

Thank you for everything you do!

## COMING UP! LUNCH & LEARN 12PM-1PM

<https://us02web.zoom.us/j/409644888>

May 5	<a href="#">Khandideh Williams PhD(c)</a> Department of Family Medicine McGill University
May 19	<a href="#">Dr. Hannah Schwartz</a> Department of Psychiatry St. Mary's Hospital Center
June 16	<a href="#">Marie-Pierre Gagnon PhD</a> Faculté des sciences infirmières Université Laval

## SIDIIEF 2022 WORLD CONGRESS

### CALL FOR PROPOSALS



The "Secrétariat international des infirmières et infirmiers de l'espace francophone" (SIDIIEF) invites all nurses, midwives, doctors and health professionals to submit a communication project for an oral or poster presentation at the occasion of its 8th World Congress, in Ottawa (Ontario, Canada), from October 16 to 20, 2022.

Come support opportunities for sharing experiences and developments in your field of expertise in French!

[Call for proposals](#): until April 22, 2022.

## INFORMATION SESSION

### PATIENT- ORIENTED RESEARCH

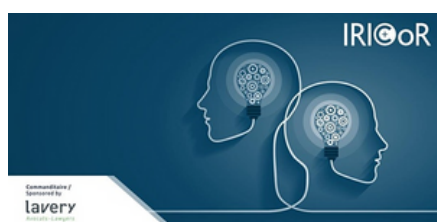
The "Comité de la relève de la recherche axée sur le patient" (RAP) invites you to participate in a virtual talk & chat which aims to tool out the next generation in patient-oriented research to prepare a grant application for major granting agencies.

Experienced mentors will discuss the success factors and issues surrounding a grant application. <https://reseau1quebec.ca/activites-et-evenements/comiterap/>

April 25, 2022, 3pm-5pm

[Registration](#)

## WORKSHOP ON INTELLECTUAL PROPERTY



Patents: Practical and strategic considerations

Guest speaker, Mr. Alain Dumont, Ph.D., Partner and Patent Agent specializing in life sciences at the Lavery Law Firm in Montreal, will tackle several important issues related to patents in academia, such as the difference between an invention and a discovery, exploitation of a patent, and more. Organized by IRICor. (In French)

April 26, 2022, 12pm-1:30pm

[Registration](#)



# FUNDING OPPORTUNITIES

## Bourses Maîtrise/Doctorat Joins-toi à l'équipe de recherche GAP!

### Projet GAP

Évaluation de l'implantation des guichets d'accès première ligne pour les patients orphelins en Montérégie et ses impacts

Tu t'intéresses à l'organisation des services de première ligne ? Par exemple, quelles sont les politiques mises en place pour améliorer l'accès aux patients orphelins ? Quel est l'impact d'une innovation organisationnelle sur l'accès aux services de première ligne ?

#### Quels sont les intérêts ?

Nombreuses questions de recherche sont pertinentes. Ton projet pourrait évaluer une innovation favorisant l'accès pour les patients orphelins

\*Recherche qualitative ou quantitative

**Bourses d'excellence : 15 000\$ / 25 000\$**  
**Soumettez d'ici le 25 juin 2022**

Intéressés à vous joindre à une équipe passionnée et dynamique ?

Veuillez nous faire parvenir les documents suivants à

[Veronique.Deslauriers@usherbrooke.ca](mailto:Veronique.Deslauriers@usherbrooke.ca) :

\*Curriculum vitae

\*Lettre de motivation

**Mylaine Breton, PhD**

Chaire de recherche du Canada en  
Gouvernance clinique des services  
Université de Sherbrooke, Longueuil



## Bourses Maîtrise/Doctorat/Post-Doctorat Joins-toi à l'équipe de recherche PUPPY !



### Projet PUPPY

Problèmes de coordination et d'accès aux soins de première ligne exacerbés par la pandémie de COVID-19 pour les patients inscrits et non-inscrits à un professionnel.

Tu t'intéresses à l'organisation des services de première ligne ? Par exemple, quelles sont les politiques mises en place pour améliorer l'accès aux patients orphelins ? Quel est l'impact de la COVID-19 sur l'accès aux services de première ligne ?

#### Quels sont les intérêts ?

Nombreuses questions de recherche sont pertinentes. Ton projet pourrait s'intégrer dans une infrastructure de recherche pan canadienne.

\*Recherche qualitative et quantitative

\*Bases de données en santé du Québec (RAMQ, MED-ECHO, etc.)

\*Entrevues avec des professionnels de la santé, des décideurs et des patients

**Bourses d'excellence : 15 000\$ / 25 000\$ / 35 000\$**  
**Soumettez d'ici le 25 juin 2022**

Intéressés à vous joindre à une équipe passionnée et dynamique ?

Veuillez nous faire parvenir les documents suivants à

[Veronique.Deslauriers@usherbrooke.ca](mailto:Veronique.Deslauriers@usherbrooke.ca) :

\*Curriculum vitae

\*Lettre de motivation

**Benoit Cossette, PhD**

Centre de recherche sur le vieillissement  
Université de Sherbrooke, Sherbrooke

**Mylaine Breton, PhD**

Chaire de recherche du Canada en  
Gouvernance clinique des services  
Université de Sherbrooke, Longueuil



Centre intégré  
universitaire de santé  
et de services sociaux  
de l'Ouest-de-  
l'Île-de-Montréal

Québec



[research.stmary@ssss.gouv.qc.ca](mailto:research.stmary@ssss.gouv.qc.ca)

514.345.3511 ext. 5060

© St Mary's Research Centre, 2022